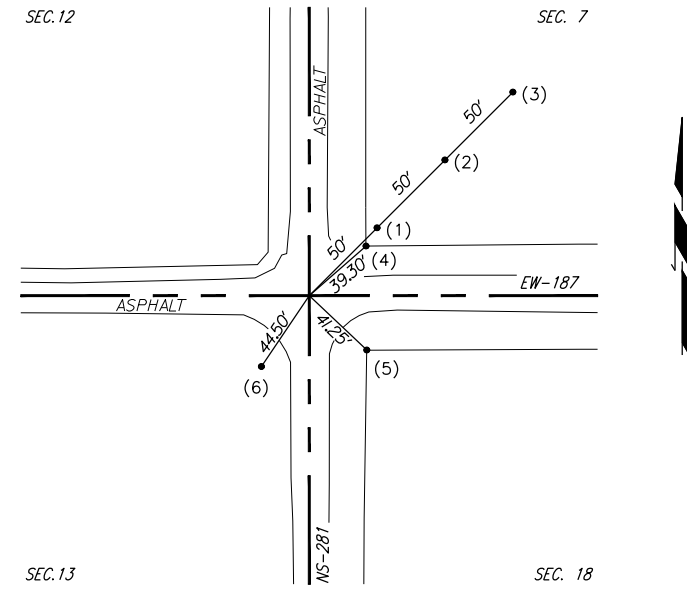


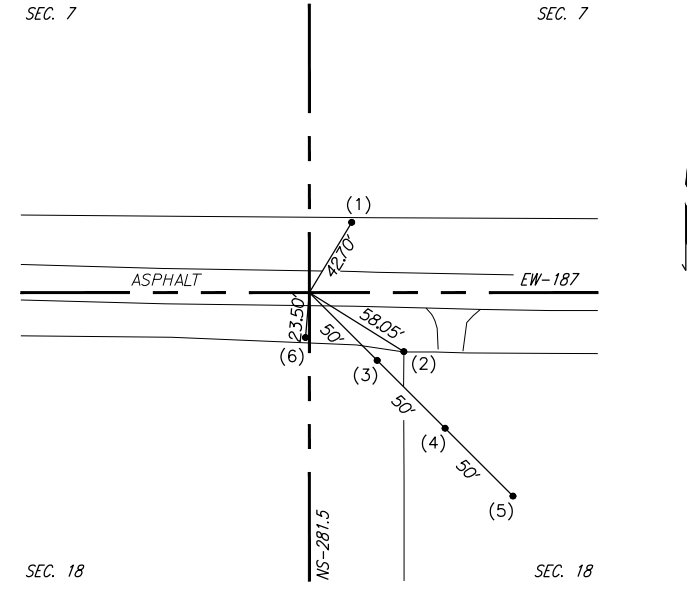
STA. 285+25.23
N QTR. COR. SEC 13, T-3-S, R-8-W
FOUND 1IN IRON PIN 4IN DEEP

- 1) FOUND SOUTHWEST FACE 3-1/2" GATE POST N 11°17'54" E 23.30'
- 2) SET 1/2" IRON PIN N 45°00'00" E 50.00'
- 3) SET 1/2" IRON PIN N 45°00'00" E 100.00'
- 4) SET 1/2" IRON PIN N 45°00'00" E 150.00'
- 5) FOUND NORTH FACE 4" STEEL CORNER POST S 01°51'48" W 21.60'
- 6) FOUND SOUTHEAST FACE 3-1/2" STEEL GATE POST N 47°42'31" W 33.80'



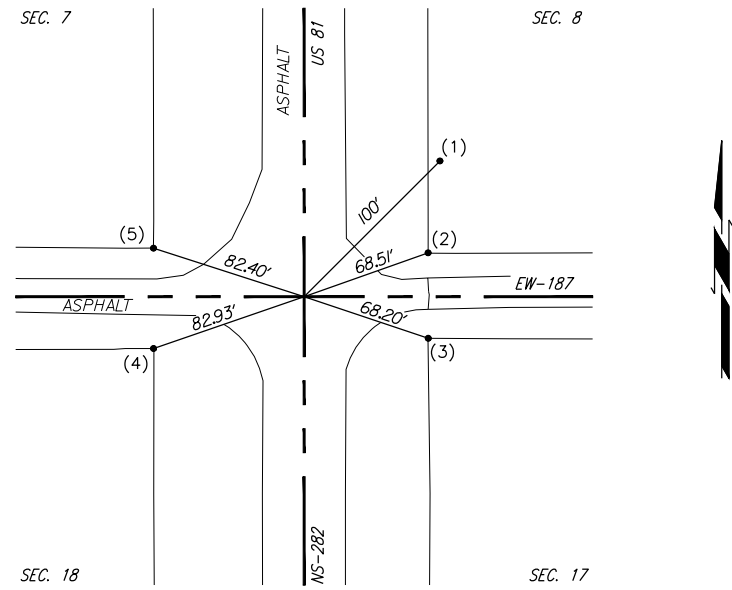
STA. 311+63.01
NE COR. SEC 13, T-3-S, R-8-W
FOUND 1/2IN IRON PIN 1IN DEEP

- 1) SET 1/2" IRON PIN N 45°00'00" E 50.00'
- 2) SET 1/2" IRON PIN N 45°00'00" E 100.00'
- 3) SET 1/2" IRON PIN N 45°00'00" E 150.00'
- 4) SET SOUTHWEST FACE 3" STEEL GATE CORNER POST N 48°52'17" E 39.30'
- 5) SET NORTHWEST FACE 6" STEEL CORNER POST S 46°40'53" E 41.25'
- 6) FOUND 50D NAIL NORTHEAST SIDE 12" TREE S 33°59'30" W 44.50'



STA. 337+06.08
N QTR. COR. SEC 18, T-3-S, R-7-W
FOUND MAG NAIL

- 1) NORTHWEST FACE 3" GALVANIZED CORNER POST S 45°15'09" E 47.95'
- 2) SET 1/2" IRON PIN S 30°00'00" E 100.00'
- 3) SET 1/2" IRON PIN S 30°00'00" E 150.00'
- 4) SET 1/2" IRON PIN S 30°00'00" E 200.00'
- 5) NORTHEAST FACE 3" STEEL CORNER POST S 47°29'23" W 41.05'
- 6) SOUTHEAST FACE 3" STEEL CORNER POST N 53°11'03" W 43.55'



STA. 363+48.12
NE COR. SEC 18, T-3-S, R-7-W
SET LARGE MAG SPIKE WD. SMITH LS 1552 SHINER

- 1) FOUND 1/2" IRON PIN 3" DEEP N 45°01'13" E 100.00'
- 2) SOUTHWEST CORNER DECORATIVE STEEL AND CONCRETE CORNER POST N 70°32'23" E 68.51'
- 3) NORTHWEST FACE 2" STEEL CORNER POST S 71°35'31" E 68.20'
- 4) NORTHEAST CORNER DECORATIVE STEEL AND CONCRETE CORNER POST S 70°59'15" W 82.93'
- 5) SOUTHEAST CORNER DECORATIVE STEEL AND CONCRETE CORNER POST N 72°11'06" W 82.40'

| STATION AND OFFSET TABLE | | | |
|-----------------------------|-----------|--------|------------------------|
| CONSTRUCTION REFERENCE LINE | STATION | OFFSET | CENTERLINE OF SURVEY |
| POINT | STATION | OFFSET | = STATION OFFSET |
| BOP | 98+85.00 | 0.00 | = 98+85.00 1.88 RT. |
| PI | 109+15.35 | 0.00 | = 109+15.34 0.30 LT. |
| PI | 127+94.37 | 0.00 | = 127+94.37 1.57 RT. |
| PI | 152+81.37 | 0.00 | = 152+81.36 0.89 RT. |
| PI | 205+37.90 | 0.00 | = 205+37.89 2.10 RT. |
| PC | 212+83.60 | 0.00 | = 212+83.56 2.74 LT. |
| PT | 215+16.39 | 0.00 | = 215+16.34 0.93 LT. |
| PC | 216+32.29 | 0.00 | = 216+32.22 1.63 RT. |
| PT | 218+67.94 | 0.00 | = 218+67.86 3.47 RT. |
| PC | 220+33.71 | 0.00 | = 220+33.61 2.40 RT. |
| PT | 222+66.50 | 0.00 | = 222+66.35 2.44 LT. |
| PC | 223+85.44 | 0.00 | = 223+85.22 6.61 LT. |
| PT | 226+15.02 | 0.00 | = 226+14.74 11.42 LT. |
| PI | 242+00.02 | 0.00 | = 241+99.70 22.42 LT. |
| PC | 253+83.79 | 0.00 | = 253+83.46 23.16 LT. |
| PT | 254+70.05 | 0.00 | = 254+69.60 19.09 LT. |
| PC | 259+29.49 | 0.00 | = 260+76.49 124.95 LT. |
| PT | 260+25.12 | 0.00 | = 261+70.72 109.07 LT. |
| PC | 263+20.04 | 0.00 | = 264+57.34 39.62 LT. |
| PT | 264+80.06 | 0.00 | = 266+15.85 20.64 LT. |
| PI | 276+06.79 | 0.00 | = 276+06.79 19.99 LT. |
| PI | 284+24.44 | 0.00 | = 284+24.44 21.73 LT. |
| PI | 304+86.25 | 0.00 | = 304+86.24 21.58 LT. |
| PC | 313+85.05 | 0.00 | = 313+85.00 19.49 LT. |
| PT | 316+05.48 | 0.00 | = 316+05.40 16.34 LT. |
| PC | 319+26.51 | 0.00 | = 319+26.31 7.40 LT. |
| PT | 321+84.75 | 0.00 | = 321+84.52 4.30 LT. |
| PI | 332+86.44 | 0.00 | = 332+86.20 8.53 LT. |
| PI | 341+27.67 | 0.00 | = 341+27.34 4.26 RT. |
| PI | 348+86.42 | 0.00 | = 348+86.08 4.89 RT. |
| EOP | 363+26.82 | 0.00 | = 363+26.48 0.07 RT. |

| CENTERLINE OF SURVEY ALIGNMENT | | | | | |
|-----------------------------------|-----------|-------------|--------------|---------------|-----------|
| POINT DESCRIPTION | STATION | NORTHING | EASTING | DIRECTION | DISTANCE |
| SW COR. SEC. 9, T-3-S, R-8-W | 100+00.00 | 353313.8387 | 1952880.3862 | S 89°28'38" E | 2639.4610 |
| S QTR. COR. SEC. 9, T-3-S, R-8-W | 126+39.49 | 353289.7594 | 1955519.7667 | S 89°27'51" E | 2642.0408 |
| SE COR. SEC. 9, T-3-S, R-8-W | 152+81.53 | 353265.0513 | 1958161.6920 | S 89°54'30" E | 2629.1592 |
| S QTR. COR. SEC. 10, T-3-S, R-8-W | 179+10.69 | 353260.8429 | 1960790.8479 | S 89°54'38" E | 2629.1099 |
| SE COR. SEC. 10, T-3-S, R-8-W | 205+39.80 | 353256.7423 | 1963419.9546 | N 89°57'54" E | 2640.9867 |
| S QTR. COR. SEC. 11, T-3-S, R-8-W | 231+80.79 | 353258.3539 | 1966060.9413 | N 89°58'15" E | 2544.3541 |
| SE COR. SEC. 11, T-3-S, R-8-W | 257+25.14 | 353259.6486 | 1968605.2950 | S 00°07'17" E | 149.6210 |
| SW COR. SEC. 12, T-3-S, R-8-W | 257+25.14 | 353110.028 | 1968605.6120 | N 89°54'21" E | 2650.4721 |
| N QTR. COR. SEC. 13, T-3-S, R-8-W | 285+25.23 | 353114.3821 | 1971256.0806 | N 89°54'35" E | 2637.7745 |
| NE COR. SEC. 13, T-3-S, R-8-W | 311+63.01 | 353118.5392 | 1973893.8518 | S 89°58'27" E | 2543.0729 |
| N QTR. COR. SEC. 18, T-3-S, R-7-W | 337+06.08 | 353117.3927 | 1976436.9244 | S 89°59'39" E | 2642.0356 |
| NE COR. SEC. 18, T-3-S, R-7-W | 363+48.12 | 353117.1280 | 1979078.9600 | | |